

ALICH Group

Archaeology, Landscape, Indigenous Cultural Heritage





Our Values

ALICH Group recognises we all need to be heard clients and the community and that we expect value for money and timely services.

The ALICH Group prides itself on ensuring all our clients benefit from these common values.

The ALICH team engages with all our clients and proponents to ensure every project undertaken and completed is considerate of the following principles:

- Outcomes which deliver mutual benefit
- Opportunities for engagement are inclusive

ALICH believes that engagement with cultural heritage provides proponents with opportunities to play a pro-active role in a community's development and enables on time project completion.

Ongoing Relationships

ALICH group prides itself with establishing and maintaining good relations with all clients and stakeholders they work with.

Established in 2012

A team with over 50years experience

Our Strength

ALICH have an ongoing commitment to the development of fledgling and poorly resourced Aboriginal organisations.

Each year staff work with groups throughout Australia on a pro-bono basis to ensure that they are able to adequately document and record their cultural heritage, especially in situations where it is threatened by degrading natural elements or a past development has disturbed cultural heritage that was not recorded at the time.

ALICH has worked with two Aboriginal groups in Victoria to support the development of applications for Representative Aboriginal Party (RAP) status.

Achieving RAP status will afford the group access to their cultural heritage data-base and allow them to take an active part in the documentation and assessment of cultural heritage work undertaken within their traditional lands.





Our Services

The ALICH Group has engaged in and successfully completed a range of challenging and diverse projects for our clients.

ALICH Group offers a range of services including the completion of:

- Cultural Heritage Management Plans
- Historical Heritage Surveys
- Site Significance Assessments
- Due Diligence reporting
- Oral history recording
- Desktop surveys/reports
- Standard and Complex assessments
- Cultural Heritage Awareness (Historical & Indigenous) training
- Site audits

and the provision of;

- Analysis of archaeological material
- Expert opinion (archaeological)

The ALICH Group actively consults and engages with Indigenous groups.



Our Compliance

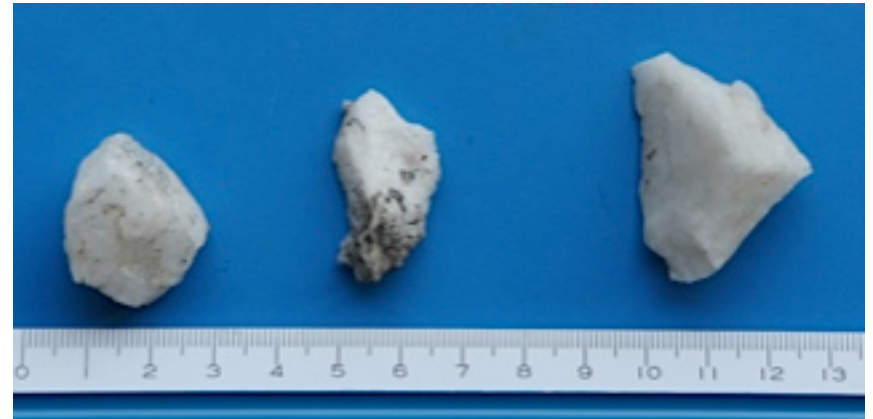
Each of our compliance frameworks align with:

- AS 8001:2008
Fraud and Corruption Control
- AS 8003:2003
Corporate Governance Corporate Social Responsibility
- AS/NZS 4801:2001
Occupational Health & Safety Management Systems
- AS/NZS ISO 14001:2004
Environmental Management Systems
- AS/NZS ISO 9001:2008
Quality Management Systems
- AS/NZS ISO 31000:2009
Risk Management Systems

ALICH carries the following comprehensive insurances:

- Work Cover
- Public Liability
- Professional Indemnity
- Comprehensive Travel Insurance

Copies of the Certificates of Currency can be provided on request.



Our Customers

Over the past 25 years the principal staff and associates have been involved with projects in most states and territories of **Australia including:**

- Commercial & Residential property development
- CPS Global – Telecommunications infrastructure
- SANTOS - GLNG project
- FMG – Solomon Project
- Synergy Metals – Mt Wills precinct
- Morning Star Gold; Woods Point & Loch Fyne
- NE Water – Glenrowan pipeline
- Arrow Energy – LNG Surat & Bowen Gas
- Parks Victoria
- Purnululu – Bungle Bungles
- Western Desert – cultural heritage project
- Alpine Shire – Kiewa River Walk, Bright-Wandiligong trail
- Epic Energy – SE Pipeline
- SP Ausnet – Bogong High Plains
- Mt Hotham Resort Management Board
- APIC – property development



ALICH Group Pty Ltd

ABN- 54 160 578 085

(p) 03-9088 2004

(e) info@alichgroup.com.au

(m) PO Box 618

South Yarra, VIC 3141

www.alichgroup.com.au